

MiNT

c o p i e s

DESIGN

PRINTING

AUTHORING



Duplicated and printed in 24 hours? That's what we do.

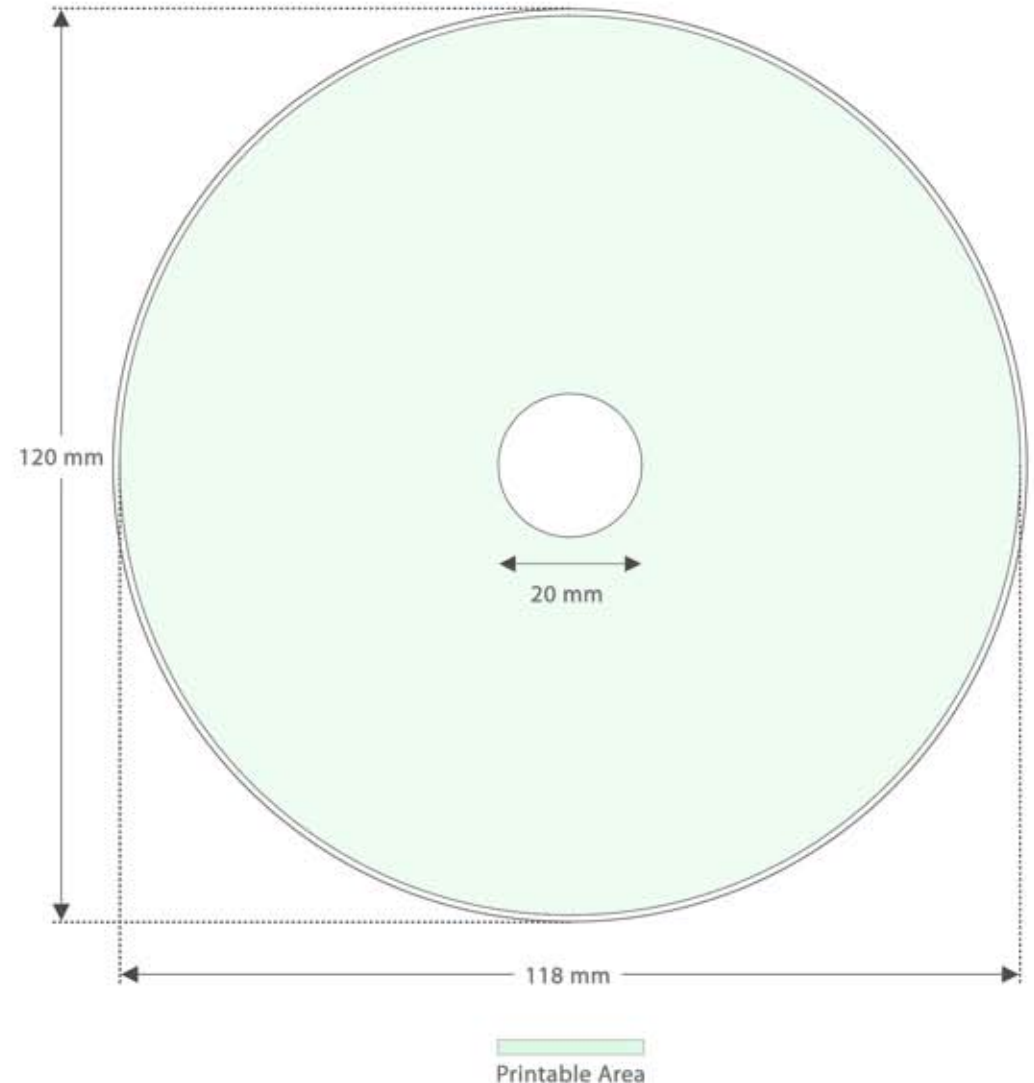
ARTWORK GUIDE

DVD/BLU-RAY/CD SPECIFICATIONS

- Standard DVD, Blu-ray and CD discs have a diameter of 120mm. The printable area is 118mm and the hole in the centre of the disc is 20mm in diameter.
- When producing disc face designs you should allow for bleed of at least 2mm for both the inner and outer diameters.
- Ideally, artwork should cover the centre hole completely.
- However be aware that any details placed in this area will be removed during the printing process.
- Please remove all guides from your designs before providing us with the finished artwork.
- Artwork should be supplied in the PSD, PDF, EPS or JPEG formats with a minimum 300dpi.
- Please note: the colour mode for Duplicated discs is RGB and for Replicated discs is CMYK.

Contact us now for more information and a competitive quote

0161 432 9012
www.mintcopies.com

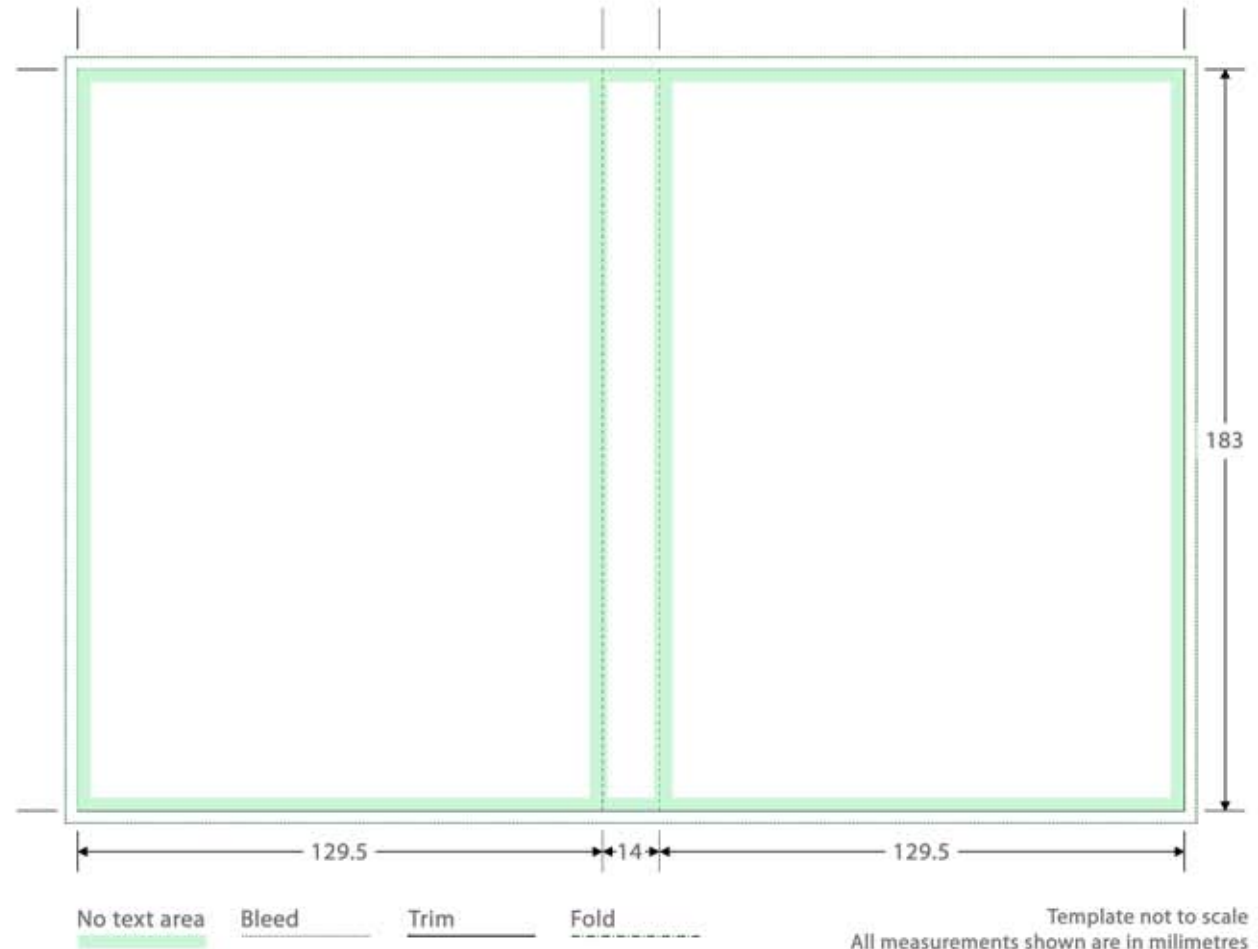


DVD SLEEVE SPECIFICATIONS

- When designing, avoid placing text too close to the edge and spine of the sleeve. This is to prevent such details from being cropped when the sleeves are guillotined.
- Artwork must 'bleed' beyond the edges of your design to help facilitate the guillotining process.
- Artwork should be supplied in the PSD, PDF, EPS or JPEG formats at a minimum of 300dpi.
- Any fonts used should be provided along with the artwork. Alternatively, type can be converted to outlines prior to the document being supplied.
- Slimline DVD cases are also available. The specifications are the same as for a standard case except for the 7mm spine.
- Other DVD packaging solutions are available, please contact us for further details.

Contact us now for more information and a competitive quote

0161 432 9012
www.mintcopies.com

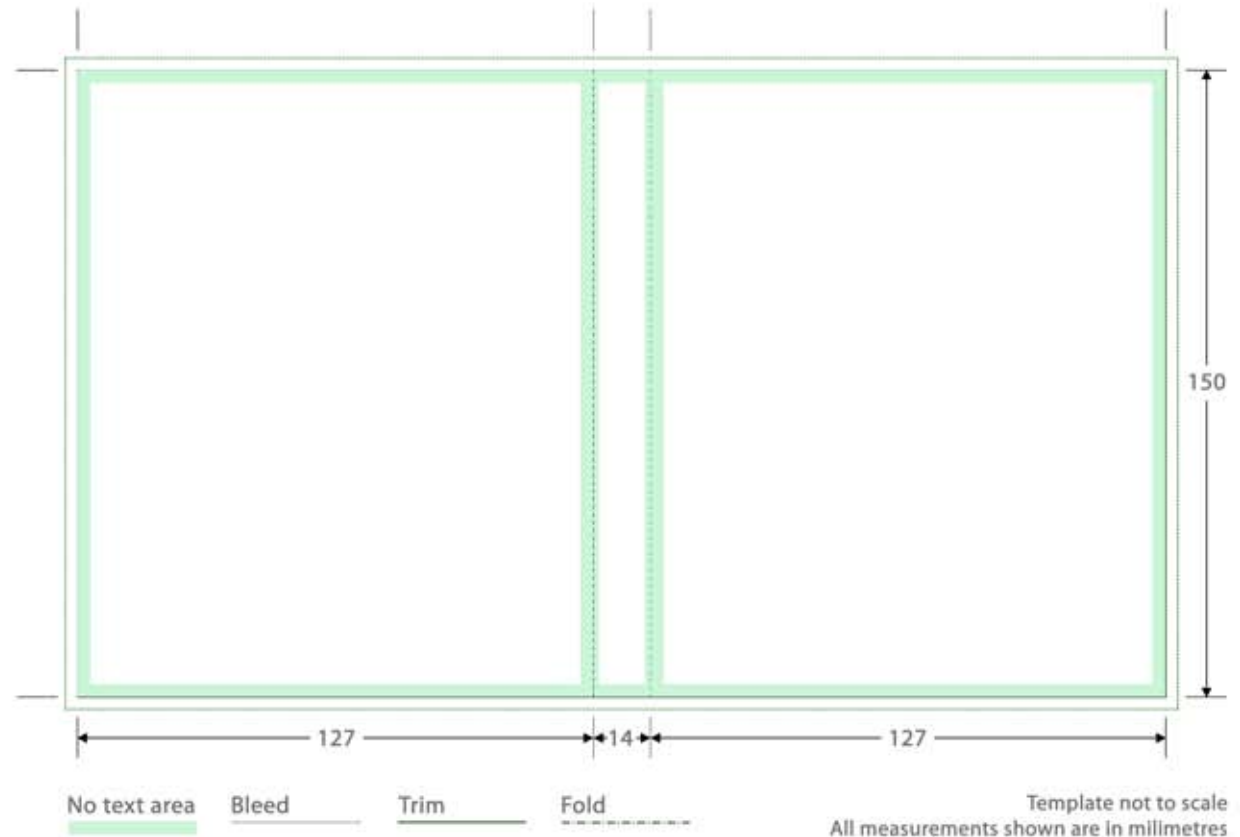


BLU-RAY SLEEVE SPECIFICATIONS

- When designing, avoid placing text too close to the edge and spine of the sleeve. This is to prevent such details from being cropped when the sleeves are guillotined.
- Artwork must 'bleed' beyond the edges of your design to help facilitate the guillotining process.
- Artwork should be supplied in the PSD, PDF, EPS or JPEG formats at a minimum of 300dpi.
- Any fonts used should be provided along with the artwork. Alternatively, type can be converted to outlines prior to the document being supplied.
- Slimline Blu-ray cases are also available. Please contact us for specifications.
- Other Blu-ray packaging solutions are available, please contact us for further details.

Contact us now for more information and a competitive quote

0161 432 9012
www.mintcopies.com

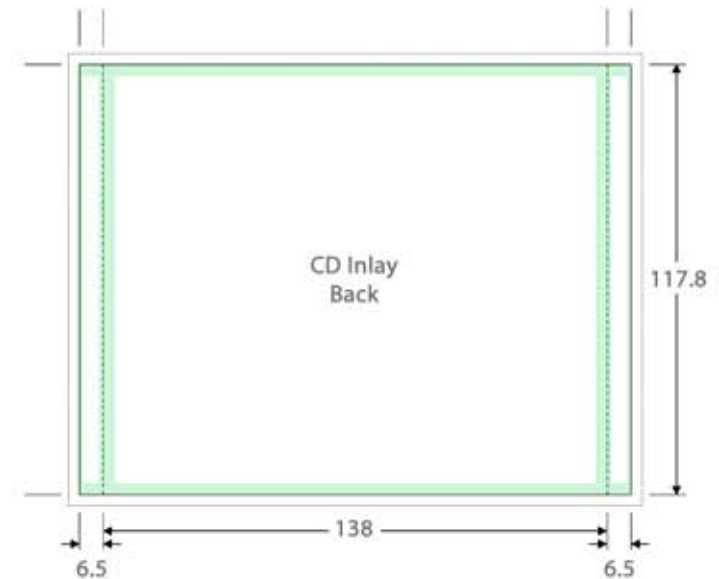
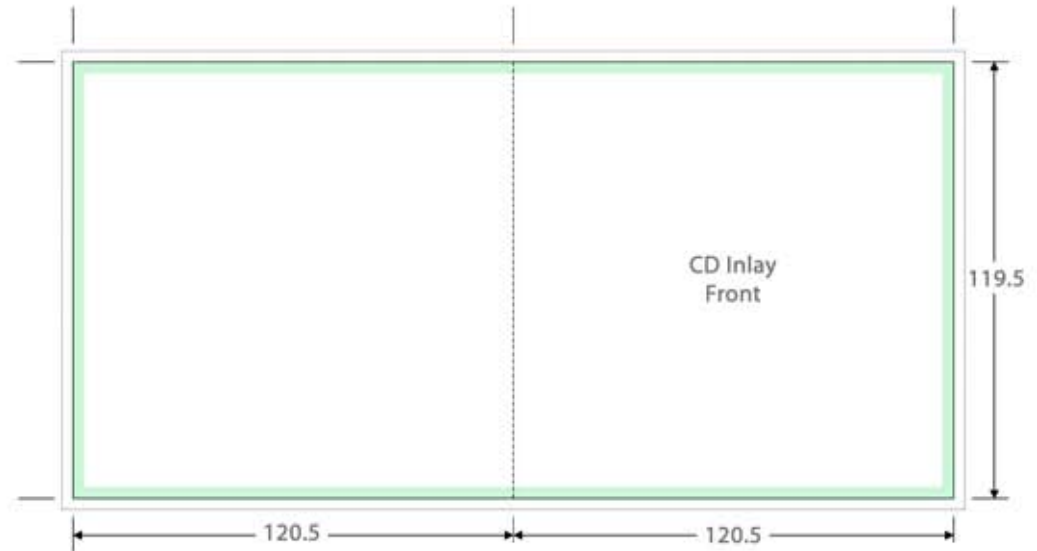


CD JEWEL CASE SPECIFICATIONS

- When designing, avoid placing text too close to the edge of the inlays. This is to prevent such details from being cropped when the sleeves are guillotined.
- Artwork must 'bleed' beyond the edges of your design to help facilitate the guillotining process.
- Artwork should be supplied in the PSD, PDF, EPS or JPEG formats at a minimum of 300dpi.
- Any fonts used should be provided along with the artwork. Alternatively, type can be converted to outlines prior to the document being supplied.
- Slimline CD cases are also available. The specifications for the front inlay are the same as the Jewel case.
- Other CD packaging solutions are available, please contact us for further details.

Contact us now for more information and a competitive quote

0161 432 9012
www.mintcopies.com



No text area

Bleed

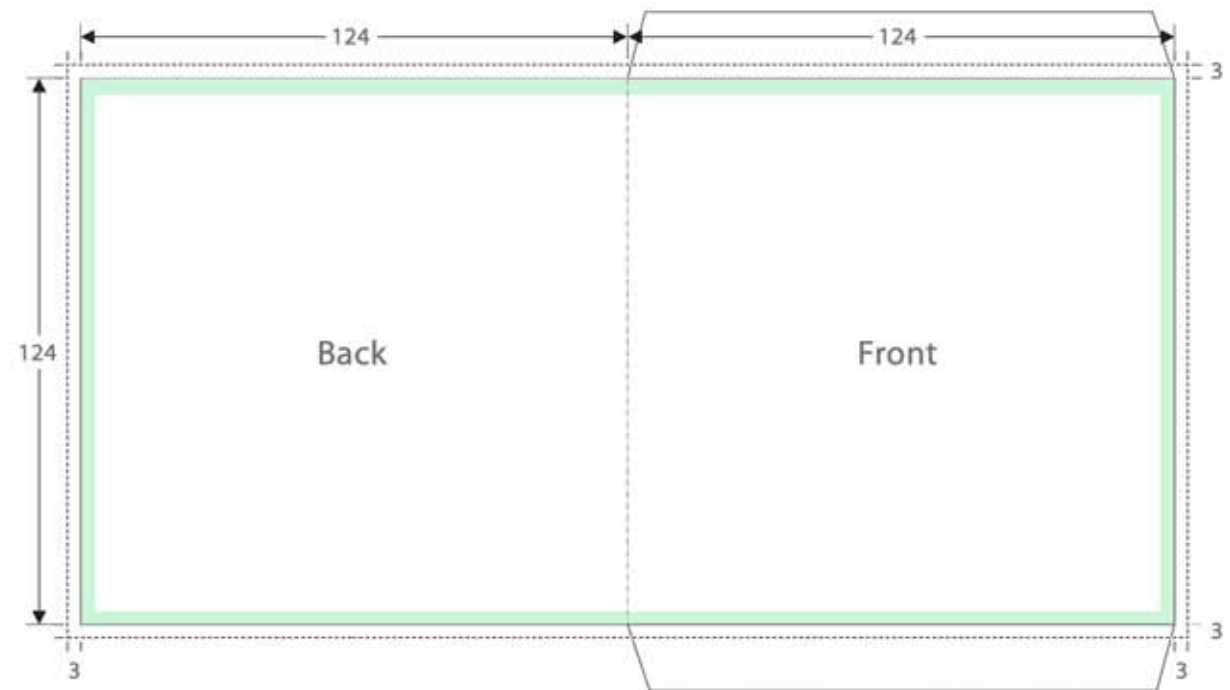
Trim

Fold

Template not to scale
 All measurements
 shown are in millimetres

CD CARD WALLET SPECIFICATIONS

- When designing, avoid placing text too close to the edge of the artwork. This is to prevent such details from being cropped when the sleeves are guillotined.
- Artwork must 'bleed' beyond the edges of your design to help facilitate the guillotining process.
- Artwork should be supplied in the PSD, PDF, EPS or JPEG formats at a minimum of 300dpi.
- Any fonts used should be provided along with the artwork. Alternatively, type can be converted to outlines prior to the document being supplied.
- Other CD packaging solutions are available, please contact us for further details.



No text area Bleed Trim Fold

Template not to scale
All measurements shown are in millimetres

Contact us now for more information and a competitive quote

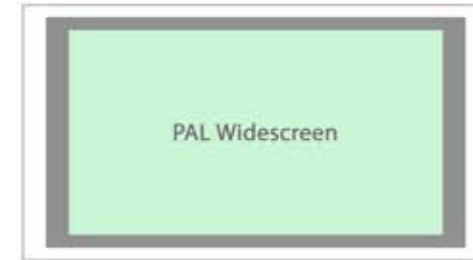
0161 432 9012
www.mintcopies.com

DVD/BLU-RAY/ MENU SPECIFICATIONS

- When producing artwork for DVD/Blu-ray menus it is important to consider Safe Title/Action (see example).
- No important action (video) should appear beyond the grey border and no text (titles) should appear outside of the green area. Any visual outside of these areas may be cropped when viewed on a television.
- The screen examples on the right are our most requested formats. Should you require other format specifications, such as NTSC, please contact us.
- Artwork should be supplied in the PSD, PDF, EPS or JPEG formats at 72dpi. Complex designs should be supplied as an unflattened PSD document.

Contact us now for more information and a competitive quote

0161 432 9012
www.mintcopies.com



Frame Size: 720 x 576 pixels Resolution: 72dpi
Pixel Aspect Ratio: PAL Widescreen



Frame Size: 1920 x 1080 pixels Resolution: 72dpi
Pixel Aspect Ratio: Square Pixels

— Safe Action — Safe Title

Mint Copies

Tel: 0161 432 9012 sean@mintcopies.com info@mintcopies.com

Mint Design

Tel: 0161 476 2997 martin@mintcopies.com alan@mintcopies.com

South Manchester Studios, Heaton Mersey Industrial Estate, Battersea Road, Stockport, Cheshire. SK4 3EA